

Careers in Health and Social Care



This presentation...

- Why study healthcare?
- Career options
- Courses at BU
- Competition for places
- What makes a good personal statement
- Work experience
- Interview tips
- What we're looking for in an applicant
- Fees and funding
- Facilities at BU

Why study health care?

- Regulated by a professional body (HCPC, NMC, GMC)
- Placements an integral part of all courses
- Tuition fees paid and students apply for a means tested bursary, and student loans
- 94%* graduate employment rate for BU healthcare students





Why study a career in Health and Social Care?



[Video on careers in healthcare >>](#)

What are the career options?

Nursing



Adult Nursing gives you a real chance to make a difference to people's lives. It's both a rewarding and challenging career. You will learn how to make and act on clinical decisions in partnership with people.

Mental Health Nursing: One of the primary roles of a mental health nurse is to educate and enable, encouraging those experiencing mental

health issues to progress towards recovery.

Children's and Young People's Nursing: involves everything from nursing a sick newborn to an adolescent road accident victim. You'll not only need to be concerned with the child, but also to consider the care and support needed by the wider family, including the parents.



Paramedic Science

Working on their own or with an emergency care assistant or ambulance technician, a paramedic is the senior healthcare professional at an accident or a medical emergency. Paramedics assess the patient's condition and give essential treatment.



Occupational Therapy

Occupational therapy is about enabling people to do the things they want and need to do in everyday life. As an occupational therapist, your work with a huge variety of people, find out what limits them from doing what they want to do, and then work out solutions.



Midwifery

Midwives prepare women for the delivery of new life, which makes them a vital presence during all stages of pregnancy, labour and the early postnatal period.

Physiotherapy

Physiotherapists treat people with physical problems caused by accident, illness or ageing, identifying and maximising movement through health promotion, preventive healthcare, treatment and rehabilitation.



Operating Department Practitioners

ODPs provide high standards of patient care alongside medical and nursing colleagues during the anaesthetic, surgical and recovery phases of perioperative care. They're a vital member of the multi-disciplinary operating theatre team.

Nutrition



Nutritionists investigate the relationships between the food we eat, our health and the crucial role of health promotion. If you are interested in healthy eating and want to help improve people's wellbeing, this job could be perfect for you.

Courses at BU

Course	UCAS Points Required
BA (Hons) Social Work	300
BSc Paramedic Science	280
DipHE Operating Department Practice	240
BSc (Hons) Midwifery	340
BSc (Hons) Mental Health Nursing	260-300
BSc (Hons) Adult Nursing	300
BSc (Hons) Children & Young People Nursing	300
BSc (Hons) Occupational Therapy	320
BSc (Hons) Physiotherapy	360
BSc (Hons) Clinical Exercise Science	280
BSc (Hons) Nutrition	280
BA (Hons) Sociology	280

Competition to get on to courses

- Occupational Therapy 340 applicants (31 places)
- Physiotherapy 534 applicants (30 places)
- Midwifery 711 applicants (80 places)
- Paramedic Science 468 applicants (30 places)
- Social Work applicants 308 (35 places)
- ODP 167 applicants (30-32 places)
- Adult Nursing 1412 applicants (293 places)
- Child Health Nursing 400 applicants (25 places)
- Mental Health Nursing 432 applicants (60 places)

2012 application statistics



What makes a good personal statement?

Why are you applying?

- Include why are you interested in the subject
- Why have you chosen the course

About the course

- Your understanding of the subject and what's required to study it
- Your enthusiasm for the subject and any specific areas of interest
- What you want to do in the future with the skills and knowledge you gain
- How you'd be an asset to the university

Skills, knowledge and experience

- How your previous studies relate to the course
- Relevant aspects of jobs, placements, work experience or volunteering
- Particularly, any positions of responsibility you've held
- Use these to demonstrate you're a great candidate and have the skills and qualities the university is looking for

Other achievements and attributes

- Activities and hobbies that show your interest in the subject
- Any non-accredited training or achievements that show your skills
- Any qualities you have that will set you apart from other applicants

Demonstrate an insight into the profession and a commitment to the role

How can you show your caring, compassionate nature?

Only apply for one profession

What 'hands-on' experience do you have?

Keep your hobbies to a minimum



Applying to university - a helpful guide



0:04 / 7:05



[Video on applying for health care courses >>](#)



Work experience

Work experience ideas include:

- Working with Beavers, Rainbows, Brownies, Cubs, Scouts and Girl Guide groups
- Helping in youth clubs/ projects and summer play schemes
- Helping with breastfeeding groups
- Working with a school on peer support projects (reading schemes, buddying systems)
- Volunteering at a care home or hospital
- Night shelters/soup kitchens
- Volunteering at tea and luncheon clubs at local churches
- Supporting Age Concern befriending schemes
- Working at charity shops
- GP volunteering schemes



www.vinspired.com

www.do-it.org.uk

[www.csv.org.uk/
volunteering/youth](http://www.csv.org.uk/volunteering/youth)

Interview skills



Prepare – get to know about the course, the university and the profession beforehand

Ask someone to practise interviewing you so you get used to answering questions in a formal setting

Think about why you really want to come to BU and to this profession

Show how enthusiastic you are

Be yourself

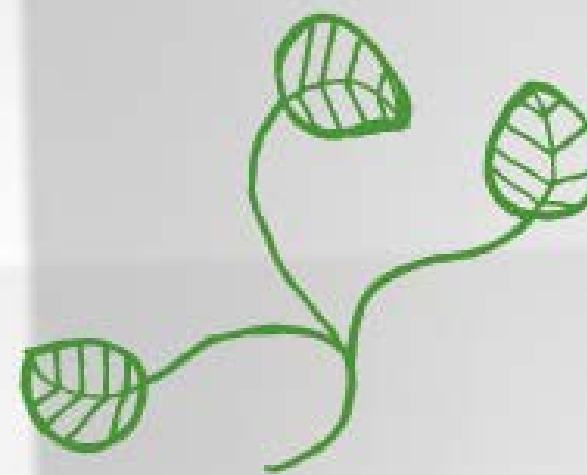
Be honest

Arrive early

Make eye contact

Remember to bring important documents and do any pre-interview work that is required

Make sure you have plenty of time so if you are driving, make sure there is enough time on your parking meter or book a late train home.





Top tips for interviews



[Video on interview tips >>](#)

What we're looking for in an applicant

Academic qualifications

4 GCSEs (grades A*-C) including Maths and English or appropriate Key Skills level 2

3 A-levels or equivalent qualifications such as a BTEC Extended Diploma or an Access to Higher Education Diploma with 60 Credits - at least 45 at level 3 remainder at level 2.

Recent academic study within the last five years (three years for Midwifery)

Recommended subjects

Biology or Human Biology

Psychology

Sociology

Health and Social Care

Health Science

Selection criteria

Have an interest and clear understanding of the profession

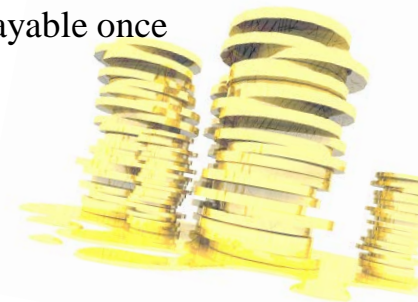
Have undertaken relevant work or informal care experience

Have the motivation and commitment to undertake the course

Be able to demonstrate personal skills and qualities relevant to the course.

Fees and funding

- The NHS will pay the tuition fees for all courses (including Paramedic Science from Sept 14, but not Social Work)
- All UK/EU students are eligible for:
 - a non-means tested grant of £1,000 per year (non-repayable)
 - a means tested bursary of up to £4,395 per year (non-repayable)
- Helpful bursary calculators available on the NHS Student Bursaries office [website](#)
- Students can also apply for a maintenance loan from Student Finance England of £2,324 per year (repayable once students are earning over £21,000 per annum)



Facilities at BU

